



AUTORIDAD MARÍTIMA DE PANAMÁ
DIRECCIÓN GENERAL DE PUERTOS E INDUSTRIAS MARÍTIMAS
AUXILIARES

CIRCULAR
DGPIMA/CCP/025/2018

PARA: AGENCIAS NAVIERAS

DE: 
GUIMARA TUÑÓN GUERRA
Directora General de Puertos e Industrias Marítimas Auxiliares.



ASUNTO: ACTUALIZACIÓN DE LAS CARTAS NÁUTICAS 1400 Y 2417

FECHA: 4 DE DICIEMBRE DE 2018

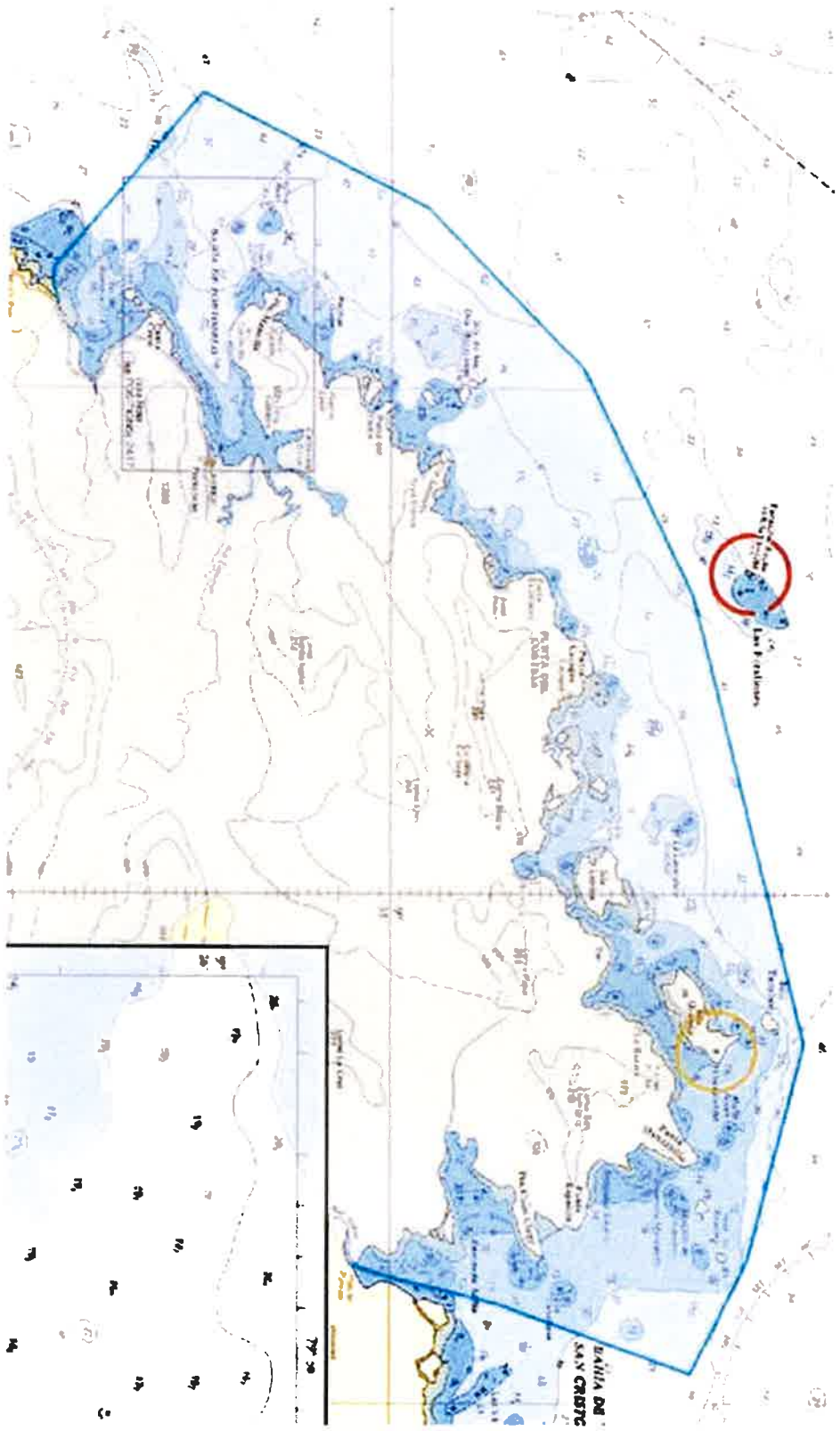
Por este medio tenemos a bien informarles a todas las agencias navieras, que se han actualizado las Cartas Náuticas 1400 y 2417, de acuerdo a la comunicación NtM48-2018. Cabe destacar que dicha actualización incluye el área protegida de la Bahía de Portobelo.

A continuación mostramos las coordenadas que corresponden y adjuntamos una imagen del área con restricción correspondiente a la comunicación NtM 48-2018.

| | | | |
|----|--------------|-----|--------------|
| P1 | 9° 31.54' N | P7 | 9° 38.53' N |
| | 79° 41.01' O | | 79° 31.41' O |
| P2 | 9° 33.16' N | P8 | 9° 37.98' N |
| | 79° 42.90' O | | 79° 30.30' O |
| P3 | 9° 35.37' N | P9 | 9° 34.62' N |
| | 79° 41.77' O | | 79° 31.36' O |
| P4 | 9° 36.93' N | P10 | 9° 32.82' N |
| | 79° 40.19' O | | 79° 36.93' O |
| P5 | 9° 37.99' N | P11 | 9° 36.49' N |
| | 79° 37.98' O | | 79° 39.58' O |
| P6 | 9° 39.09' N | | |
| | 79° 33.53' O | | |

Atentamente,


MP/JG/AO/cagm



II

5643 UNITED STATES OF AMERICA - Gulf of Mexico - Depths.
Source: OCS

Chart 525 [*previous update 5115/18*] UNDETERMINED DATUM

| | | |
|--------|--|--------------------------------|
| Insert | depth, 2¼, enclosed by 3fm contour, with seabed type, <i>R</i> | (a) 24° 40'·80N., 82° 22'·55W. |
| Delete | depth, 5½, close E of: | (a) above |
| Insert | depth, 2¼, enclosed by 3fm contour, with seabed type, <i>R</i> | (b) 24° 39'·97N., 82° 23'·27W. |
| Delete | depth, 4½, close W of: | (b) above |

5648 VENEZUELA - Wreck.
Source: Venezuelan Notice 64/17

Chart 483 [*previous update 4970/18*] UNDETERMINED DATUM

| | | |
|--------|--|----------------------------|
| Insert |  PA | 10° 45'·00N., 61° 47'·00W. |
|--------|--|----------------------------|

Chart 1044 [*previous update 4970/18*] WGS84 DATUM

| | | |
|--------|--|--------------------------|
| Insert |  PA | 10° 45'·0N., 61° 47'·0W. |
|--------|--|--------------------------|

5649 PANAMA - Caribbean Sea Coast - Marine Reserve. Legend. Note.
Source: Panama Maritime Authority

Chart 1400 [*previous update 2030/18*] WGS84 DATUM

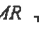

| | | |
|--------|--|---|
| Insert | limit of marine reserve,  MR  , joining: | 9° 31'·54N., 79° 41'·01W. 9° 33'·16N., 79° 42'·90W. 9° 35'·37N., 79° 41'·77W. 9° 36'·93N., 79° 40'·19W. 9° 37'·99N., 79° 37'·98W. 9° 39'·09N., 79° 33'·53W. 9° 38'·53N., 79° 31'·41W. 9° 37'·98N., 79° 30'·30W. 9° 34'·62N., 79° 31'·36W. |
| | the accompanying note, MARINE RESERVE, centred on: | 9° 32'·82N., 79° 36'·93W. |
| | legend, <i>Marine Reserve</i> (see Note), centred on: | 9° 36'·49N., 79° 39'·58W. |

Chart 2417 (Panel E, Portobelo) [*previous update 4001/17*] UNDETERMINED DATUM

| | | |
|--------|---|---------------------------|
| Insert | the accompanying note, MARINE RESERVE, centred on: | 9° 34'·18N., 79° 40'·27W. |
| | legend, <i>Marine Reserve</i> (see Note), centred on: | 9° 32'·70N., 79° 41'·95W. |